

INTRODUCING THE LOVE CLOUD COLLECTION

BY VICTORIA'S SECRET

A WHOLE NEW LEVEL OF COMFORT

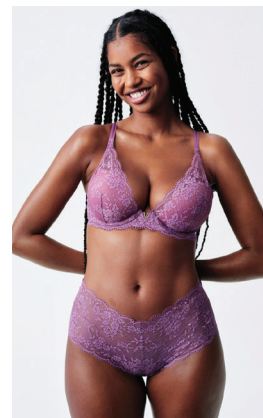
EIGHTEEN WOMEN, ONE INCREDIBLY COMFORTABLE COLLECTION.

We gave our amazing cast the softest, can't-help-but-touch selection of bras Victoria's Secret has ever created. Whatever you call it, we think it will be the most comfortable collection you've ever worn. Featuring a cloud-like pad, the softest fabric, a smoothing back and sides, fully adjustable straps, and our signature gold V-hardware. Launching in six classic frames, you'll wonder how you ever got dressed without it.

Bra sizes: 32A-40DDD, 32C-40DDD, XS-XL. • Panty sizes: XS-XXL.



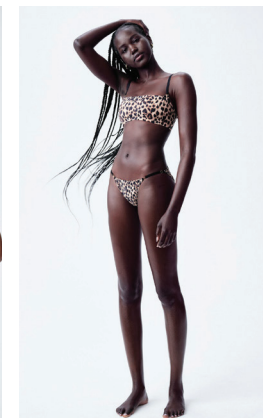
Hailey, 25,
Model
wearing **THE SMOOTH DEMI BRA** in a 32B



Yacine, 25,
Production Coordinator
wearing **THE LACE HALF-PAD
PLUNGE BRA** in a 34D



Gia, 30,
Design Consultant and Model
wearing **THE SMOOTH DEMI BRA** in a 32C



Adut, 22,
Model
wearing **THE SMOOTH STRAIGHT-NECK
LOUNGE BRA** in a Small



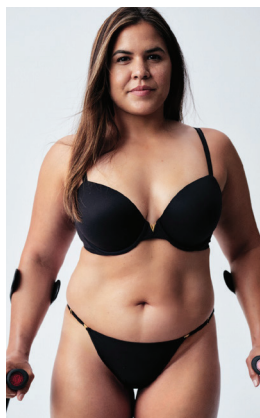
Devyn, 20,
Model
wearing **THE LACE HALF-PAD PLUNGE BRA** in a 36C



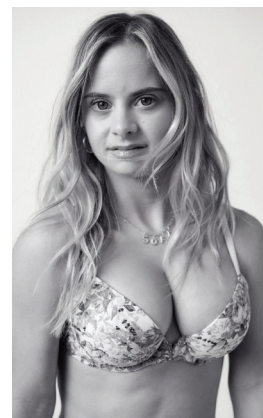
Valentina, 27,
Model
wearing **THE PUSH-UP PLUNGE BRA** in a 32B



Jill, 28,
Model
wearing **THE PUSH-UP PLUNGE BRA** in a 36C



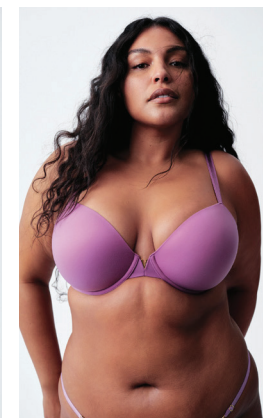
Miriam, 32,
Actor and Model
wearing **THE SMOOTH DEMI BRA** in a 36C



Sofia, 25,
Model
wearing **THE PUSH-UP PLUNGE BRA** in a 34B



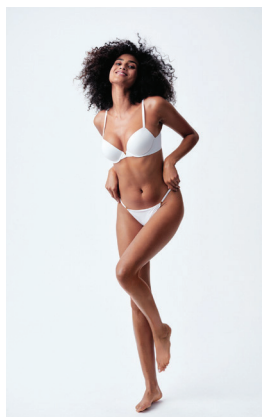
Taylor, 25,
Model
wearing **THE SMOOTH DEMI BRA** in a 32C



Paloma, 29,
Model
wearing **THE SMOOTH DEMI BRA** in a 38D



Sabina, 33,
Model
wearing **THE SPORT BRA** in a Medium



Imaan, 25,
Model
wearing **THE SMOOTH DEMI BRA** in a 34B



Sylvia, 41,
Accessory Designer
wearing **THE LACE HALF-PAD PLUNGE BRA** in a 34B



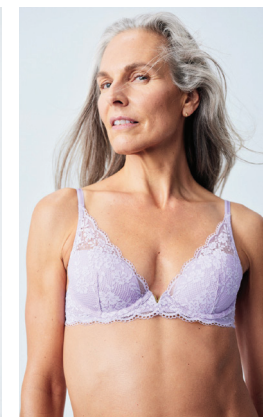
Cello, 27,
Nez Perce Tribe - Wildland Firefighter
wearing **THE PUSH-UP PLUNGE BRA** in a 38C



Jailyn, 47,
Set Medic and Pilates Professional
wearing **THE SMOOTH DEMI BRA** in a 34B



Shalom, 48,
Model
wearing **THE LACE HALF-PAD PLUNGE BRA** in a 34B



MaryAnn, 53,
Multidisciplinary Creative and Artist
wearing **THE LACE HALF-PAD PLUNGE BRA** in a 34A















































